

# The Queens EST. Hall 1958

The Queens Hall  
44 High Street  
Narberth  
SA67 7AS  
01834 861212  
[www.thequeenshall.org.uk](http://www.thequeenshall.org.uk)

## The Queens Hall Specifications 2024



Contents

<u>Main Contacts</u>	2
<u>Main Hall Capacities and Dimensions</u>	3
<u>Seating Arrangements</u>	4
<u>Facilities</u>	5
<u>Lighting</u>	6
<u>Sound</u>	7
<u>AV</u>	8
<u>Stage Dimensions</u>	8
<u>Loading</u>	9
<u>Parking</u>	10

**Main Contacts**

**Venue Manager**

Lara Herde

[manager@thequeenshall.org.uk](mailto:manager@thequeenshall.org.uk)

01834 861212

**Technical Manager**

Charlie Tattersall

[technical@thequeenshall.org.uk](mailto:technical@thequeenshall.org.uk)

01834 861212

### Capacity

Once we know your requirements, we can guide you to exact capacity numbers. Below is our general Guide to the Main Hall's capacity.

Standing Event: 473 (including Staff)

Fully Seated: 271 – Inc Retractable Tiered Seating (Capacity 119)

Seated Dinner Function: 150

### Main Hall Dimensions (Excluding Stage)

Width: 11m

Length: 20m

Height: 4.5m





## Seating Arrangements

### Fully Seated



### Standing Event



### Cinema Seating



## Dinner Function



## Facilities

- 2 Artist changing rooms available one with en suite (shower and toilet) and one without
- WiFi available throughout the whole building
- Fully licensed bar facility
- Box office
- Parking at rear (Limited)
- Full disabled access (but not to dressing rooms)
- Large car parking facility located opposite
- Air Conditioning in Main Hall

## Lighting

### Control

- Chamsys Pc Wing & Extra Wing
- 1x DMX 512 From FOH to Stage
- 1x EtherCON from FOH to Stage
- 1x Chauvet Net-X II Art Net Node
- 1x Chauvet Data Stream 4 DMX Splitter

### Circuits

- 36 Circuits in total
- 6 circuits on stage LX 1
- 12 circuits on stage LX 2
- 6 circuits on FOH LX 1
- 12 circuits on FOH LX 2

### Fixtures

- 1000w Par Cans – x20
- 500w Profiles – x4
- 1000w Profiles - x2
- 1000w Fresnel – x5
- ADJ Hex Bar LED – x4
- Elumen8 Evora 1000 BSW – x8
- Elumen8 Fury 200 2 Cell Blinder – x4
- Chauvet DJ SlimPar Pro Pix – x8

### Dimming

- 4x Zero 88 Beta Pack 3
- 1x Zero 88 Bata Pack 2 for House Lights

## Sound

### Mixing Desk

- Allen & Heath SQ7

### Stage Box

- GX4816 Located Up Stage Right

### FOH

- Primary and Redundant EtherCON at FOH to Stage

### FOH System PA – 12k Logic Ethos Line Array System Comprising of:

- 2x DP2140 System Controllers
- 4x B2i Twin 15" Bass Enclosure
- 2x SB2i Twin 18" Bass Enclosure
- 6x Ethos VA

### Monitor System - 5 Way Monitoring system

- 7x LM12 12" Mid/Bass Cone with 1" Compression Driver
- 1x B.5 12" Base Enclosure (For Drum Monitor)

## Microphone Stock

### Sure

- SM57 – x12
- PG81 – x3
- SM58 – x9
- Beta 57A – x1
- Beta 87A – x2

### AKG

- SE300B – x3
- D112 – x1

### Sennheiser

- E-604 – x7
- E-602 – x1

More Available Email For Details



AV

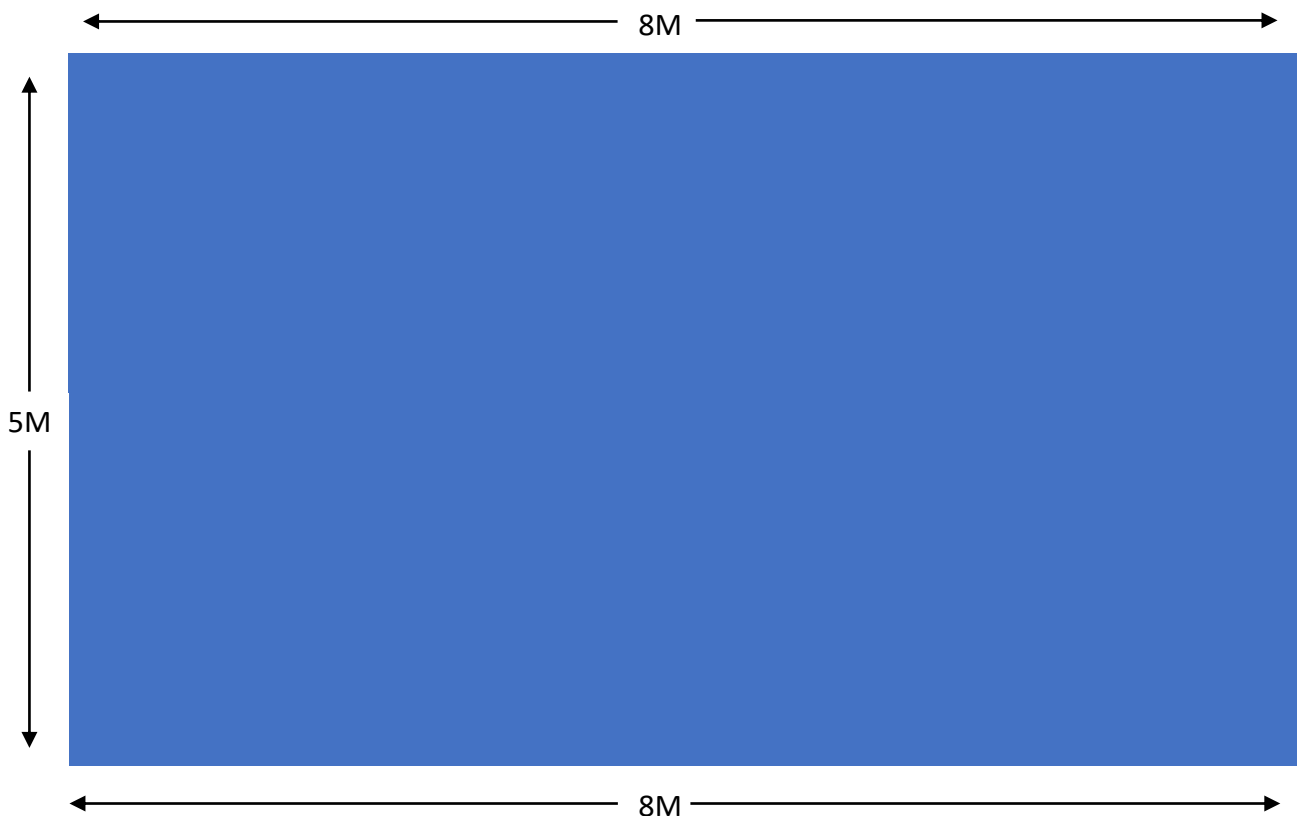
- 12ft Fast Fold Projector screen
- 6000 Lumen Projector with hanging bracket
- Cinema Screen – Halfway down Main Hall
- Projector installed in ceiling for cinema screen
- Full livestreaming capability

Misc

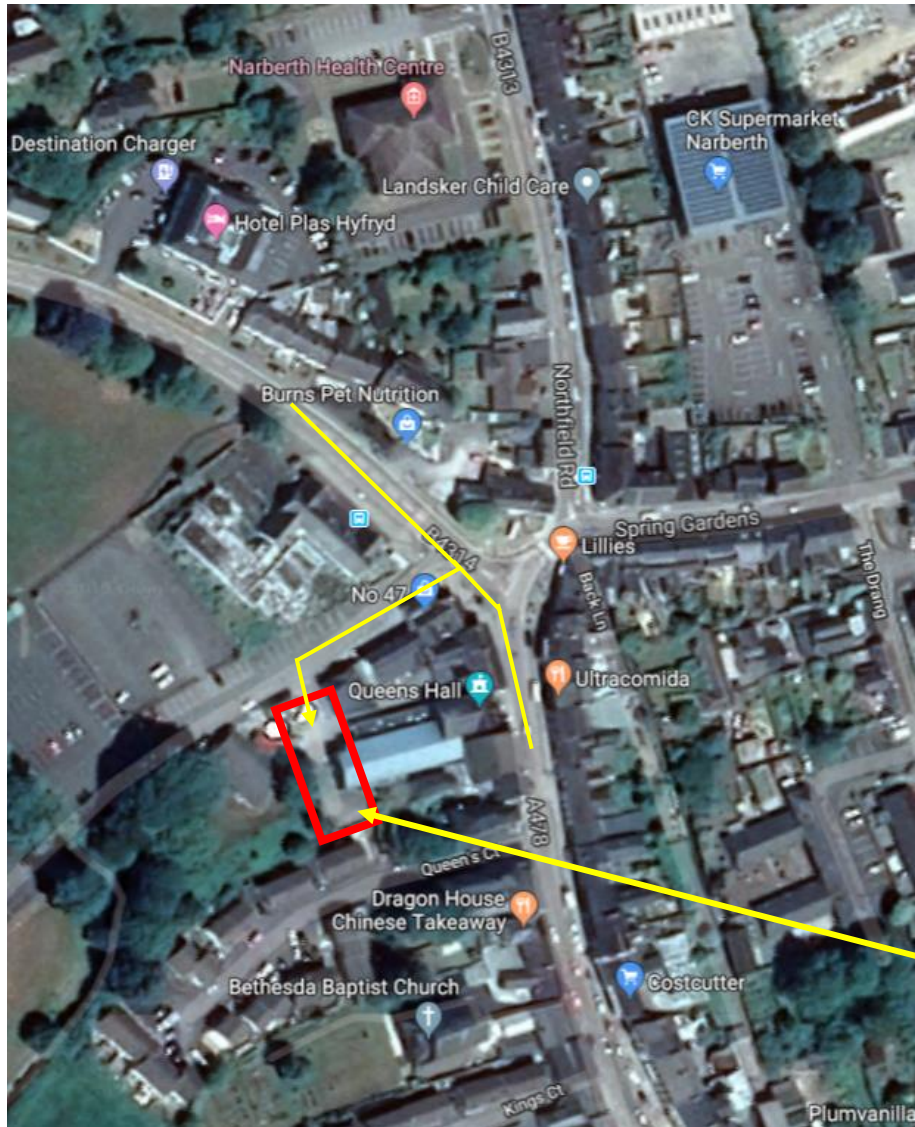
- 6x Stage risers available
- Wooden Lectern

Stage Dimensions

Flexible cubed stage (cubes 1 meter square). Accessible from both sides.



loading and unloading to the main hall is done via either the side of stage doors or through the back doors into the main hall. There are no stairs to the main hall so loading in is easy there is just two steps to gain access to stage level.



To access Queens Hall parking either come in from the B4314 and turn right into council car park  
Or follow the one-way system A478 around the town and bear left at top of town just after you pass the Queens Hall main entrance then turn left again straight after into council car park



Once you get into the council car park turn left into Queens hall parking just before the public toilets

QH Parking